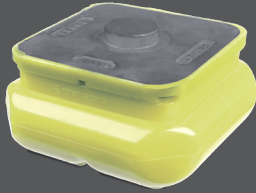


Polyurethane

PUR


- Proprietary efficient-recoil German polyurethane reduces jarring & shocks
- Reduces shock damage to the trunnion & excessive leaf spring wear
- Extremely durable & resistant to chemicals & excessive loads
- Suitable for extremely heavy duty & arduous applications

Rubber

NR


- Compounded with the world's leading rubber & carbon grades
- The unique damping quality of rubber results in minimal wear & tear to related components
- Extremely kind to suspension & load
- Best suited for medium to heavy duty applications
- First choice of fleets across USA


560.169

OEM#: 10QK1065A, 10QK365A
 Application: MACK 4" SPRING REAR SUSPENSION SS34/38, SS50 CAMELBACK, ST34 TAPER LEAF SPRING, SW/SWW WALKING BEAM SERIES TRUCKS


MPU560.169

560.170

OEM#: 10QK36B, 10QK36C, 10QK388
 Application: MACK 4" SPRING REAR SUSPENSION SS34/38, SWS573, SS44/SWS57, SS50 CAMELBACK, ST34 TAPER LEAF SPRING, SW/SWW WALKING BEAM SERIES TRUCKS


MPU560.170

560.172

OEM#: 25115012, 10QK370
 Application: MACK 4" SPRING REAR SUSPENSION SS34/38, SWS573, S44/SWS57, SS50 CAMELBACK, SW/SWW WALKING BEAM SERIES TRUCKS


MPU560.172
560.171

OEM#: 10QK33A
 Application: MACK 4" SPRING REAR SUSPENSION SS34/38, SS44/SWS57 CAMELBACK, SW/SWW WALKING BEAM SERIES TRUCKS


560.173

OEM#: 10QK32BP1
 Application: MACK 4" SPRING REAR SUSPENSION SWS573, SS58, SS65/SWS59 CAMELBACK, SW/SWW WALKING BEAM SERIES TRUCKS


560.174

OEM#: 10QK372, 10QK389
 Application: MACK 5" SPRING REAR SUSPENSION SS58, SS65/SW59 CAMELBACK, SW/SWW WALKING BEAM SERIES TRUCKS


MPU560.174