



360.000

SPRING EYE BUSH

OEM#: 16-16412-000, 16-18035-000
681-325-02-50

Application: FREIGHTLINER FAS II
AIRLINER SERIES TRUCKS



360.210

SPRING EYE BUSH

OEM#: 16-16412-000, 16-18035-000

Application: FREIGHTLINER FAS II
AIRLINER SERIES TRUCKS



360.276

HANGER

OEM#: 16-15880-000

Application: FREIGHTLINER REAR
3" EYE/ SLIP M2BC & STERLING
ACTERA SERIES TRUCKS



360.211

HOOD LATCH

OEM#: A17-12759-000, A17-12966-000,
A17-13113-000, A17-13534-000

Application: FREIGHTLINER CENTURY
CLASS SERIES TRUCKS



360.277

HANGER

OEM#: 16-12355-000, A16-12355-001,
A16-12355-003

Application: FREIGHTLINER FRONT
SUSPENSION 120 SERIES CONVENTIONAL/
COE, FLD112 CONVENTIONAL SERIES TRUCKS

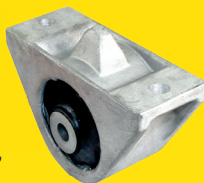


360.212

HOOD LATCH

OEM#: A17-12759-001, A17-12966-001,
A17-13113-001, A17-13534-001

Application: FREIGHTLINER CENTURY
CLASS SERIES TRUCKS



360.013

CABIN MOUNT

OEM#: 18-45384-000,
A18-40099-000

Application: FREIGHTLINER CENTURY &
COLUMBIA SERIES TRUCKS

Applicable Bush 360.354



360.207

CABIN MOUNT

OEM#: 18-59922-000

Application: FREIGHTLINER CASCADIA,
M2 SERIES TRUCKS

Applicable Bush 360.209



360.142

MOTOR MOUNT KIT

OEM#: BCD-26907-1S,
BCD-27330-1S,
BCD-28805-1S

Application: FREIGHTLINER COLUMBIA &
CENTURY CLASS SERIES TRUCKS



360.175

MOTOR MOUNT KIT

OEM#: BCD-28945-1S1,
BCD-26703-3S1,
BCD-26704-1S1, BCD-27651-1S1,
BCD-27651-2S1, BCD-27651-3S1

Application: FREIGHTLINER COLOMBIA &
CENTURY CLASS SERIES TRUCKS



360.360

MOTOR MOUNT KIT

OEM#: BCD-26703-3S,
BCD-26704-1S,
BCD-27651-1S, BCD-27651-2S,
BCD-27651-3S, BCD-28945-1S

Application: FREIGHTLINER COLOMBIA
& CENTURY CLASS SERIES TRUCKS



FREIGHTLINER

POPULAR COMPONENTS

NPA 996 - JUN 2023



Applicable Bush 10.084

360.024

TORQUE ROD

OEM#: 16-15632-001

Application: FREIGHTLINER REAR
FAS AIRLINER I, II SERIES TRUCKS

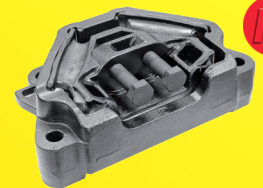


360.096

EQUALIZER

OEM#: 681-325-01-27, 681-325-08-27

Application: FREIGHTLINER 3" SPRING FH36-40
SERIES TRUCKS

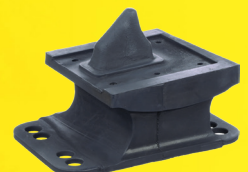


360.438

ENGINE MOUNT

OEM#: 01-33928-000S, 01-34070-000S, U-30920-301S

Application: FREIGHTLINER F237 CASCADIA
SERIES TRUCKS



360.192

INSULATOR PAD

OEM#: A16-15773-000

Application: FREIGHTLINER FRONT SUSPENSION 3"
& 4" EYE & SLIPPER, M2 SERIES TRUCKS